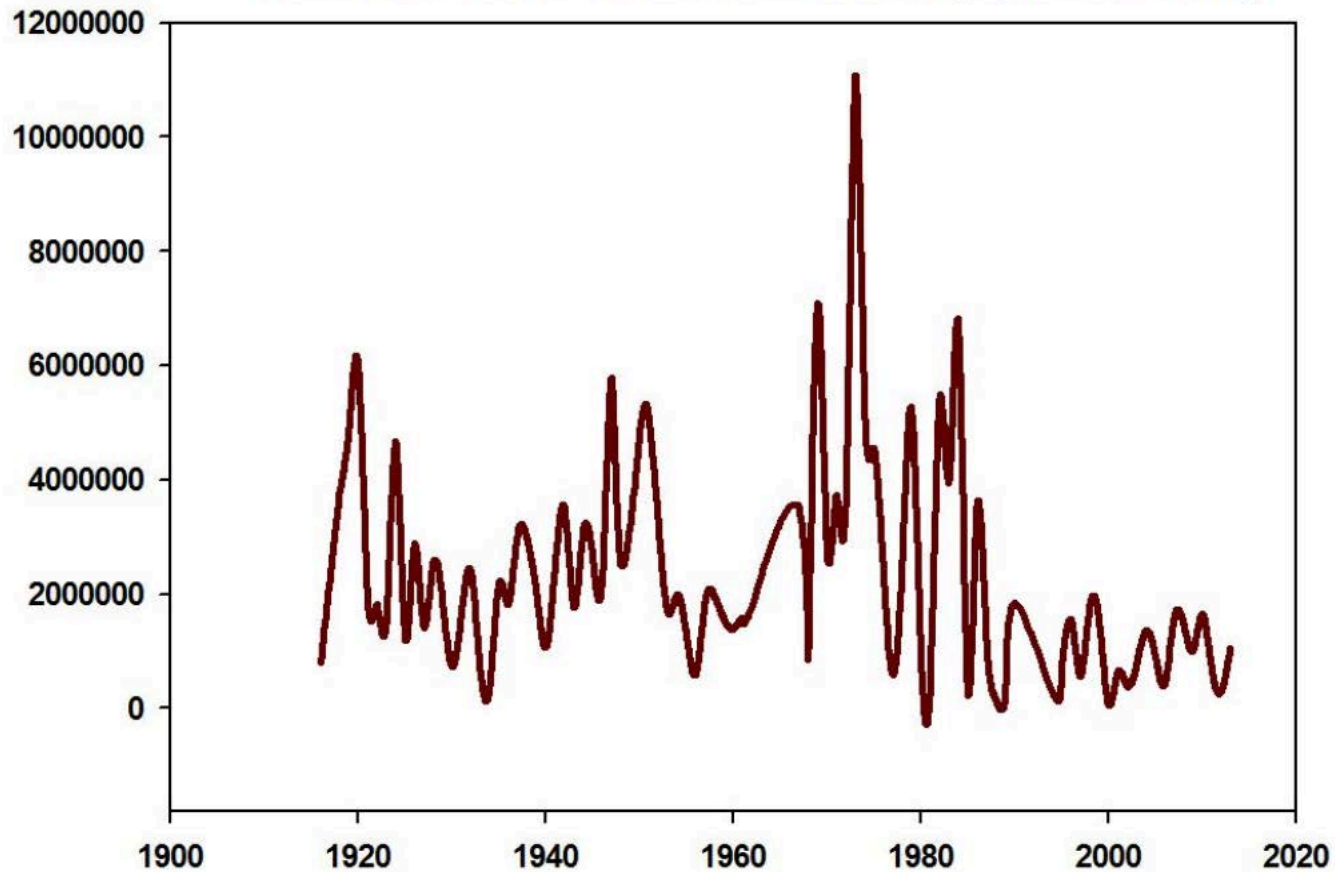
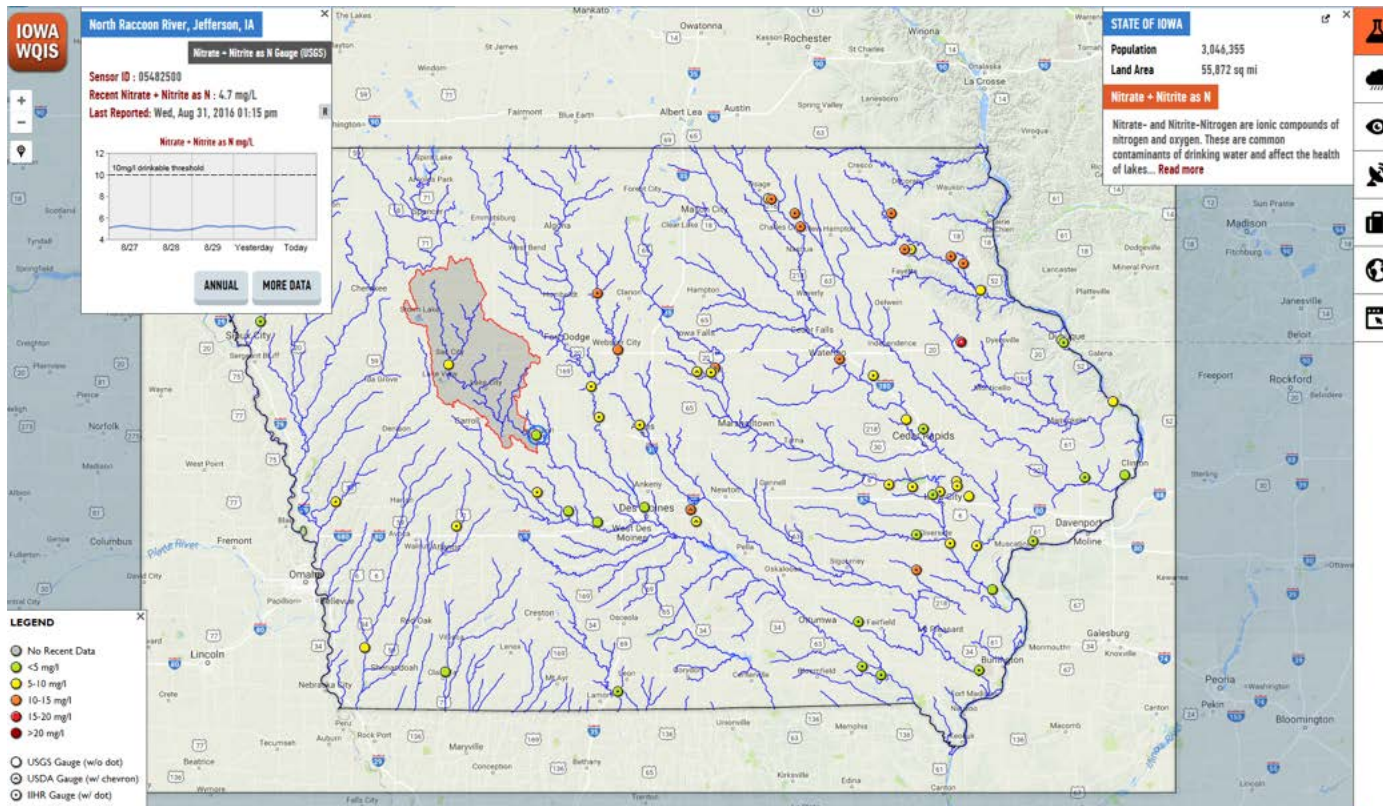


### Raccoon River Sediment Loading (metric tons)



Raccoon River sediment loading, 1916-2013.

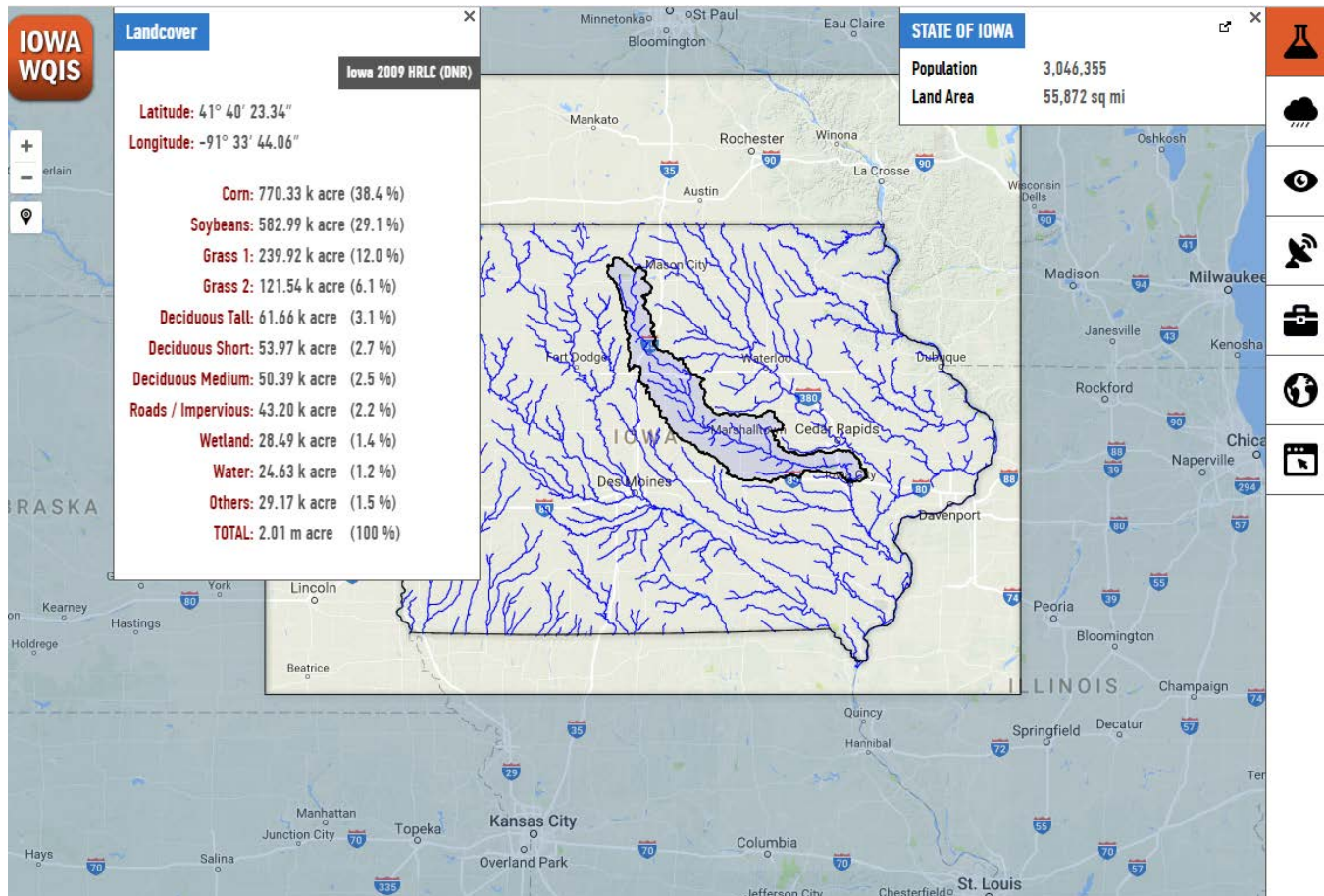
# Iowa Water Quality Information System



[iwqis.iowawis.org/](http://iwqis.iowawis.org/)

<http://iwqis.iowawis.org/app/?datetime=2017-06-06T13:00>

## Landcover Tool

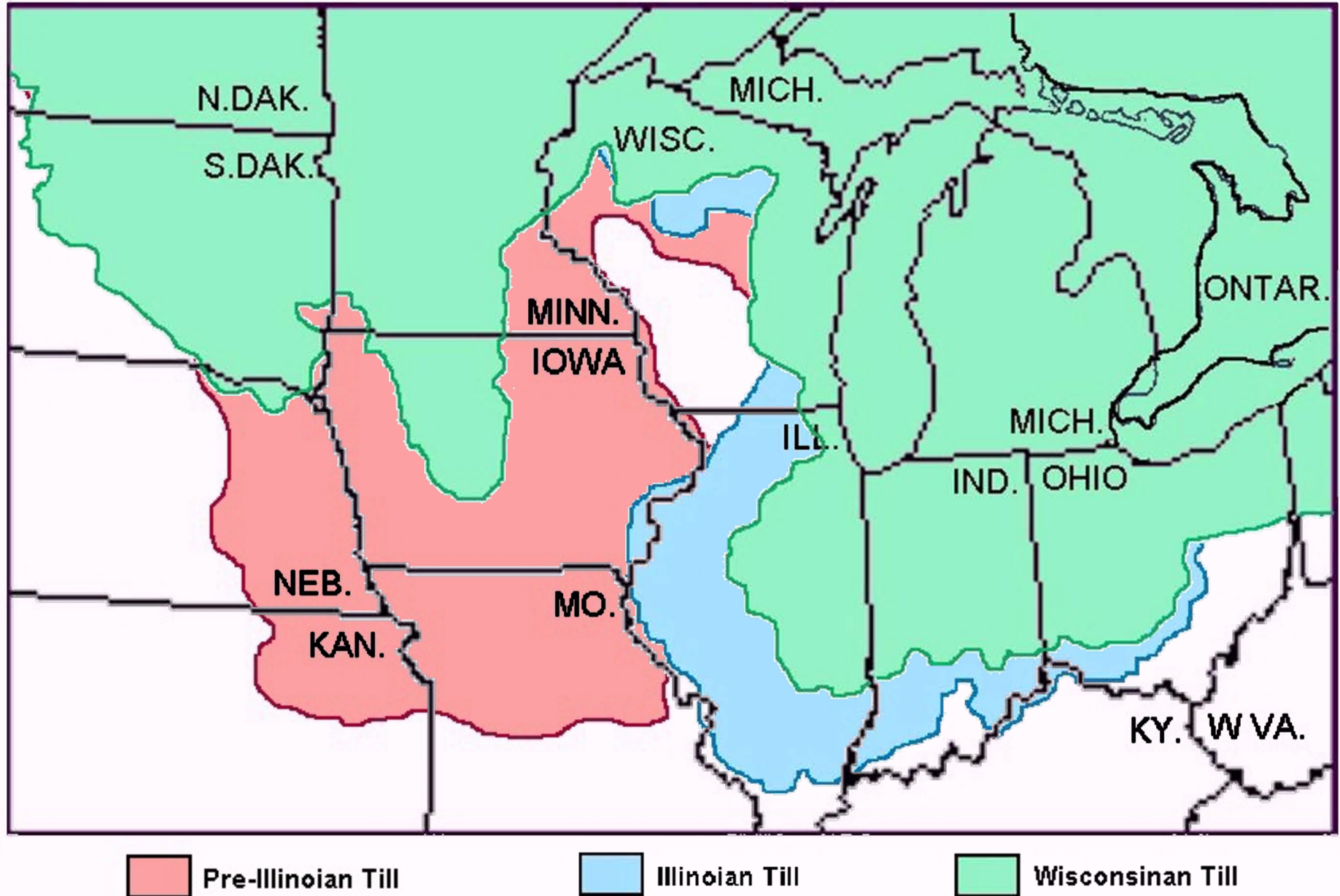


# Publications

- Practice Assessment: 11
- Wetland Research: 10
- Stream and Tile Drainage Hydrology: 6
- Nitrate Dynamics Within Streams and Reservoirs: 5
- Policy: 4
- Golf Course Soils and Nutrients: 3
- Phosphorus Transport: 4
- Watershed Nitrate Loading: 3
- Livestock and Water Quality: 1
- Groundwater Nitrate Dynamics: 1
- Carbon Transport in Tile Drainage: 1

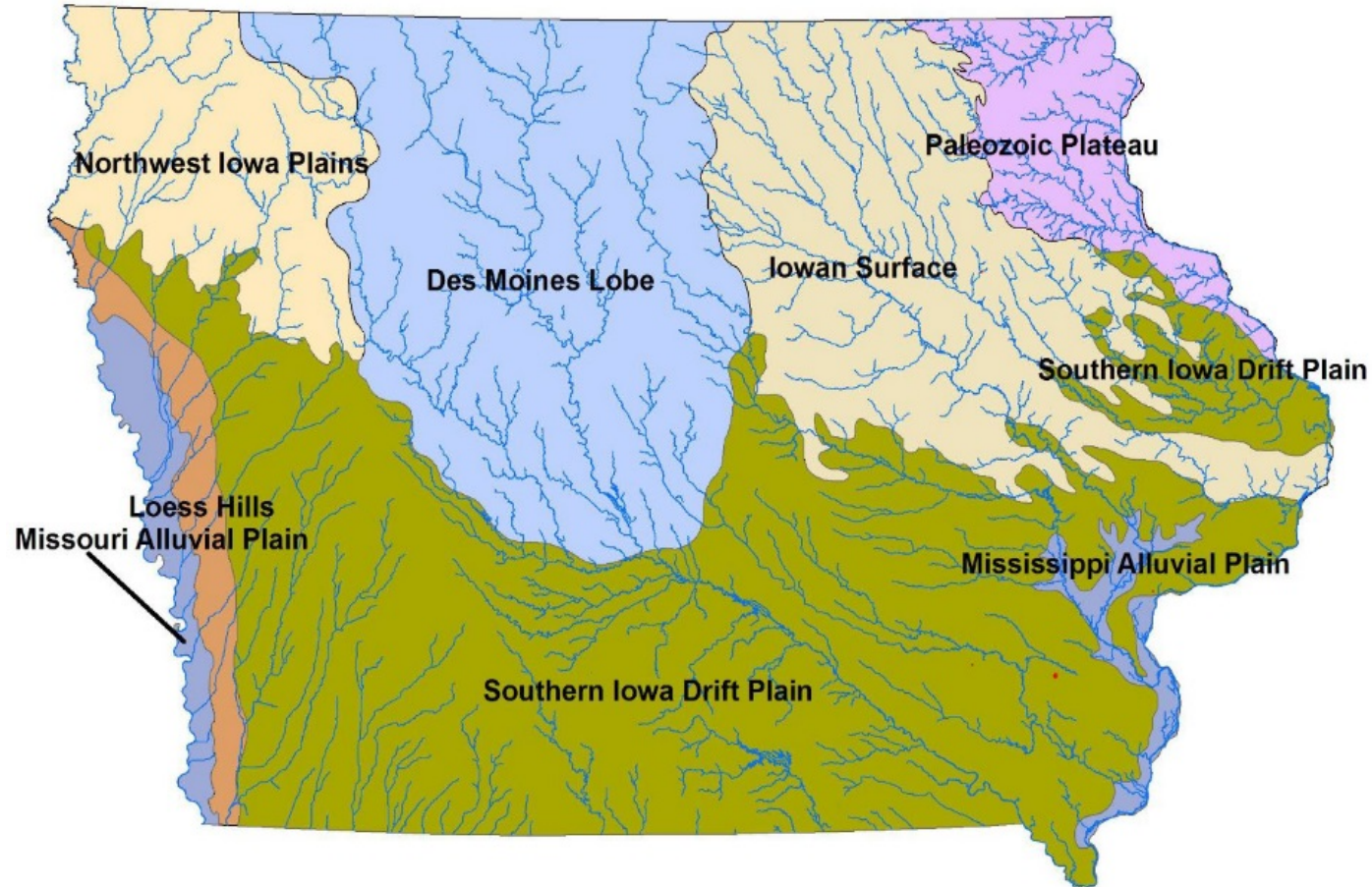


30,000 – 10,500 years



Slide courtesy of K. Schilling, Iowa Geological Survey

# Iowa Landforms



# Climate

Millett, B., Johnson, W.C. and Guntenspergen, G., 2009. Climate trends of the North American prairie pothole region 1906–2000. *Climatic Change*, 93(1-2), pp.243-267.



Fig. 1 Map of the Prairie Pothole Region (PPR) of North America based on ecoregion classification (Omernik 1987, 1995)







# Iowa Land Cover

